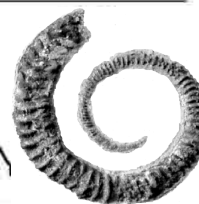

Berriasian Working Group 8th meeting

Prague (Czech Republic) - October 26 -29, 2012



Berriasian Working Group 8th meeting Prague (Czech Republic), October 26 -29, 2012

Hosted by the Institute of Geology, the Academy of Science of the Czech Republic, v.v.i., and the Institute of Geology and Palaeontology, Charles University in Prague

Fourth circular

We cordially invite you to participate in a workshop on the Berriasian Stage and the Jurassic-Cretaceous boundary. This 8th meeting will be held from October 26 to October 29, 2012 in Prague (Czech Republic).

This meeting is intended to be multidisciplinary, focusing on precise correlations that contribute to stage and J/K boundary definition. We encourage you to attend and to present your scientific results, to take part in discussion of colleagues' contributions, and to plan future cooperations. We aim to create a constructive atmosphere that will promote scientific exchange and enjoyment during your stay in magical Prague.

General information

0. Deadlines

Monday 20.9.2012 – 24:00 Deadline for registration.

Monday 27.9.2012 – 24:00 The last deadline for payment.

1. Schedule

Friday 26.10.2012 - 12:00 - 14:00 Icebreaker,
14:00 - 14:30 Introduction by Bill Wimbledon,
14:30 - 18:00 Workshop.

Saturday 27.10.2012 - 10:00 - 17:00 Workshop,
19:00 - 20:30 Workshop dinner and beer.

Sunday 28.10.2012 - Excursion to the Barrandian area (classical Lower Palaeozoic stratigraphy and palaeontology).

Monday 29.10.2012 -An additional excursion to the Bohemian Paradise: an interesting sandstone landscape area of the Bohemian Cretaceous (for interested participants).

2. Meeting place

Institute of Geology and Palaeontology, Faculty of Science, Charles University in Prague, Albertov 6, Prague 2

Lectures will be held in the lecture hall of the Museum of Earth History.



3. Payment information

Costs are as follows:

Registration:	60 EUR
Dinner:	15 EUR
Excursion 1 (Barrandian):	50 EUR
Excursion 2 (Bohemian Paradise):	50 EUR

We encourage you to pay the fee in advance via bank transfer. Details for the bank transfer are as follows: Please, specify clearly Payment Identification-Description (Variable Symbol) on your bank transfer order. If you could not find your name in the list just ask for your identification number. Please, pay all bank transfer charges.

Bank Account: **2837852319/0800**

IBAN: **CZ80 0800 0000 0028 3785 2319**

SWIFT code (BIC): **GIBACZPX**

Bank name and address: **Ceska Sporitelna, a.s., Dejvicka 50, 160 00, Praha 6**

Name and address of the account owner: Geologicky ustav Akademie Ved Ceske Republiky, v.v.i.,
Rozvojova 269, 16500, Praha 6, Czech Republic

Variable symbol / payment information: Please find yourself in 4_variable_symbols_Prague2012.xls

4. Accommodation

Each participant needs to book accommodation.

Few suggestions of hotels not far away from the University which offer online booking:

<http://www.booking.com/district/cz/prague/prague02.en-gb.html?aid=319857;sid=6462ebd6327582f9062022091f1a1255;dcid=1>

We particularly recommend the hotel Merlin - Gorazdova 22, Prague:

<http://www.booking.com/hotel/cz/merlin-nove-mesto.html?aid=319857;sid=6462ebd6327582f9062022091f1a1255;dcid=1&lang=en-gb>

5. Money

Be aware that the Czech Republic is NOT a member of the Eurozone. You will therefore need the local currency (CZK). You can exchange your currency at the airport or in any bank in Prague.

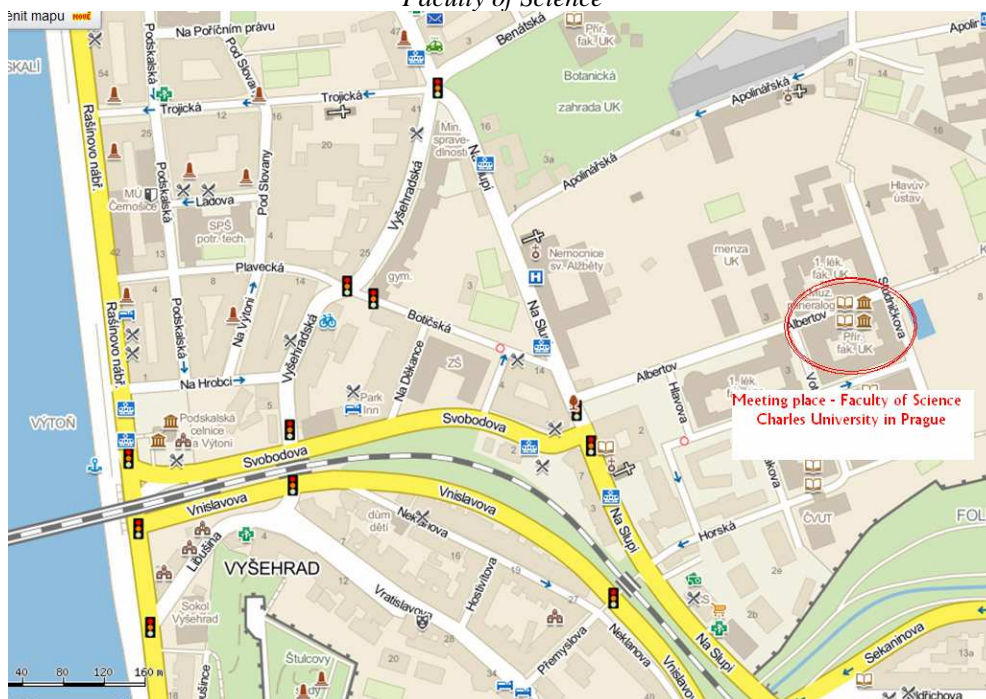
6. Contact

Comments and questions can be addressed to Petr Pruner pruner@gli.cas.cz, Petr Schnabl schnabl@gli.cas.cz, Martin Kostak martin.kostak@natur.cuni.cz and/or Martin Mazuch martin.mazuch@natur.cuni.cz.

Hotel Merlin



Faculty of Science



Centre of Prague

